

VOCATIONAL BACKGROUND

Gayle is a Home Economist with a B.S. from Colorado State University and graduate studies at the University of Oregon and Oregon State University.

She currently teaches freelance sewing classes.

She is a 4-H Home Economics Judge.

She has taught for 5 years in public schools.

She has taught for 5 years at Rogue Community College.

She has 2 years experience as an Extension Home Economist.

She has been a substitute teacher.

COMMUNITY ACTIVITIES

Current member of the Jackson County Library Advisory Board.

Active volunteer for Britt Music Festival.

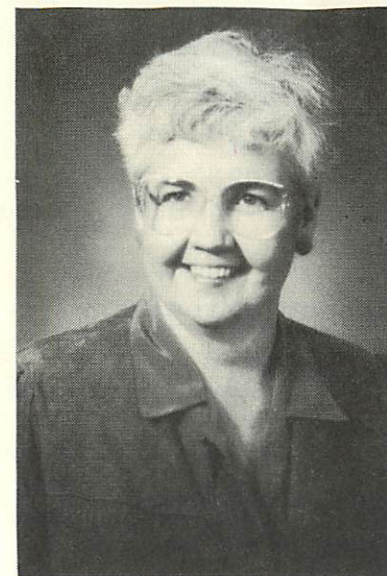
Volunteer at the Rogue Gallery for 17 years.

Formerly a member and leader of the Rogue Valley Home Economists.

Former school volunteer.

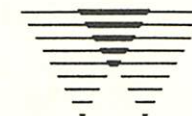
Former Girl Scout leader.

ELECT



GAYLE CLASON

OREGON DIVISION PRESIDENT



AMERICAN
ASSOCIATION OF
UNIVERSITY
WOMEN

AAUW EXPERIENCE!

ENTHUSIASM!

DEDICATION!

Oregon Division:

1989-91 Program Vice President.
1987-89 EFP Chair. Originated and coordinated EFP Gala for Convention in Bend.
1988+ VoLT Trainer.
1985 Appointed to the Long-Range Strategic Planning Committee.
1984-86 Recording Secretary.

Association:

1990 Attended Mountain Pacific Regional Meeting, Bozeman, MT. Program co-presenter.
1989 Attended Association Convention, Washington, DC.
1988 Attended EFP Chair training and EFP Gala.
1988 Attended Mountain Pacific Regional Meeting, Honolulu, HI.
1987 Boardworks training, Northern California.
1981-83 Member of AAUW Capitol Hill Lobby Corps, Washington, DC.

Branches:

Medford Branch (Oregon Division):

Member 1964-75 and 1983 to the present.

Offices held (during both periods): Community Area

Representative, Cultural Area Representative, EFP Chair,

Membership Vice-President, President (1971-72).

Currently Campaign for Choice Chair and Parliamentarian.

Honored with an EFP named gift in 1975.

Springfield-Annandale Branch (Virginia Division):

Member from 1979-83.

Offices held: EFP Luncheon Chair, Corresponding Secretary,

Legislative Chair.

Eugene Branch (Oregon Division):

Member from 1975-79. Active in interest groups and activities.

Scottsbluff Branch (Nebraska Division):

Member from 1960-62.

AAUW Trainer:

VoLT: Roseburg and Ashland, OR.

Counterparts (Secretary, EFP Chair, Program).

Mountain Pacific Region: Bozeman, MT.

Gayle joined AAUW in 1960 and
is now a Life Member of the
Association.